

Guardian®

in  
sync

Value-Added  
Services

# WorkLifeMatters Employee Assistance Program

Support services employees need and appreciate.

In today's demanding workplace environment, balancing career and family while dealing with every day issues is a challenge for most any employee. Employers can help. Our comprehensive WorkLifeMatters Employee Assistance Program<sup>1</sup>, through **Integrated Behavioral Health**, provides employees with confidential, personal and web-based support on a wide variety of important and relevant topics – from stress management, dependent/elder care, nutrition and fitness – to legal and financial issues.

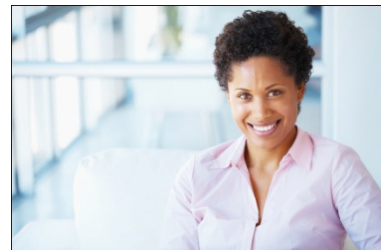
For companies, better supported employees can translate into improved productivity, decreased absenteeism and greater employee satisfaction. Plus our program includes valuable support services for employers too!

Better still, employers are automatically eligible for WorkLifeMatters when they offer three or more qualifying lines of Guardian coverage<sup>2</sup> – making it the ideal complement to your overall employee protection program.

<sup>1</sup> WorkLifeMatters Program services are provided by Integrated Behavioral Health, Inc., and its contractors. Guardian does not provide any part of WorkLifeMatters program services. Guardian is not responsible or liable for care or advice given by any provider or resource under the program. This information is for illustrative purposes only. It is not a contract. Only the Administration Agreement can provide the actual terms, services, limitations and exclusions. Guardian and IBH reserve the right to discontinue the WorkLifeMatters program at any time without notice. Legal services provided through WorkLifeMatters will not be provided in connection with or preparation for any action against Guardian, IBH, or your employer.

<sup>2</sup> Automatic for groups with up to 500 lives. Groups with more than 500 lives will be determined on a case by case basis.

GUARDIAN® and the GUARDIAN G® logo are registered service marks of The Guardian Life Insurance Company of America and are used with express permission



## Employee Program Highlights

- Unlimited telephonic consultations with an EAP Counselor
- Referrals to local counselors with up to 3 sessions at no charge
- State-of-the-art website featuring planning tools
- Free consultations with financial and legal professionals – plus discounts on legal services

## Employer Program Highlights

- Unlimited telephonic assistance on common employee/workplace issues
- Monthly newsletters and e-mail alerts
- Employee communication materials and utilization reports



DENTAL	DISABILITY	LIFE	VISION	CRITICAL ILLNESS	CANCER	ACCIDENT
--------	------------	------	--------	------------------	--------	----------